

PROPRIETARY AND CONFIDENTIAL

THE INFORMATION CONTAINED IN THIS DRAWING IS THE SOLE PROPERTY OF NEUTRONICS ENTERPRISES INC. AND SHALL NOT BE COPIED, DISCLOSED TO THIRD PARTIES, OR USED FOR ANY PURPOSE OTHER THAN THE SPECIFIC PURPOSE FOR WHICH IT WAS PROVIDED. ANY REPRODUCTION IN PART OR AS A WHOLE WITHOUT THE WRITTEN AUTHORIZATION OF NEUTRONICS ENTERPRISES INC. IS PROHIBITED.

| REVISION HISTORY |                  |            |          |
|------------------|------------------|------------|----------|
| REV.             | DESCRIPTION      | DATE       | APPROVED |
| 2024A            | INITIAL RELEASE  | 01/19/2024 | JK       |
| 2024C            | MATERIAL UPDATES | 08/10/2024 | JK       |

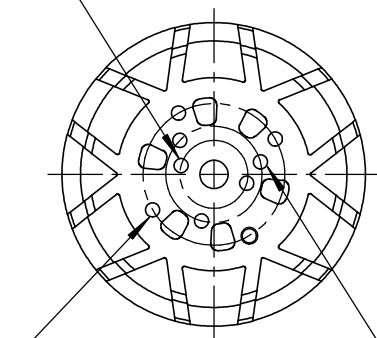
B

B

A

A

180° PATTERN THREAD  
M3 x Ø 12mm

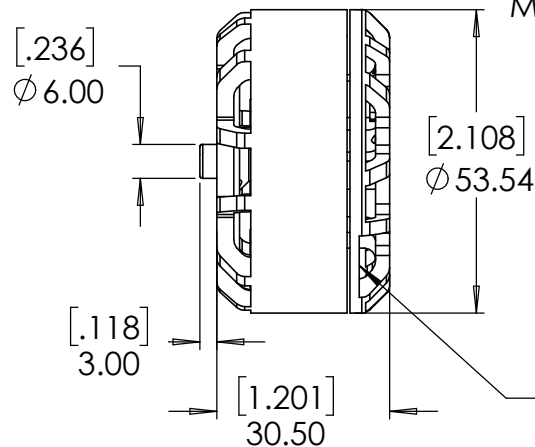


90° PATTERN THREAD  
M3 x Ø 25mm

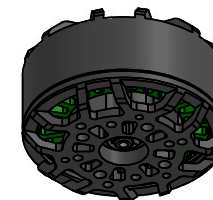
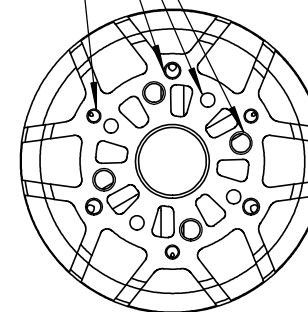
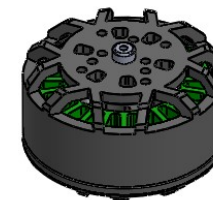
120° PATTERN THREADS  
M3 x Ø 17mm

2X 90° PATTERN THREADS  
M3 x Ø 25mm  
M4 x Ø 25mm

2X 120° PATTERN THREADS  
M2.5 x Ø 32mm  
M3 x Ø 32mm



WIRES EXIT HERE



- NOTES
1. DIMENSIONS ARE IN MM AND [IN]
  2. TOLERANCES +/- 0.05mm UNLESS OTHERWISE SPECIFIED
  3. DIMENSIONS AND TOLERANCES APPLY AFTER FINISHING

**NEUMOTORS**

|   |  |              |       |
|---|--|--------------|-------|
| TITLE:  | W4615 ASSY PROFILE   | REV:         | 2024C |
| <a href="https://neumotors.com/">https://neumotors.com/</a> | <a href="mailto:info@neutronics.com">info@neutronics.com</a> | SHEET 1 OF 1 |       |