

2

1

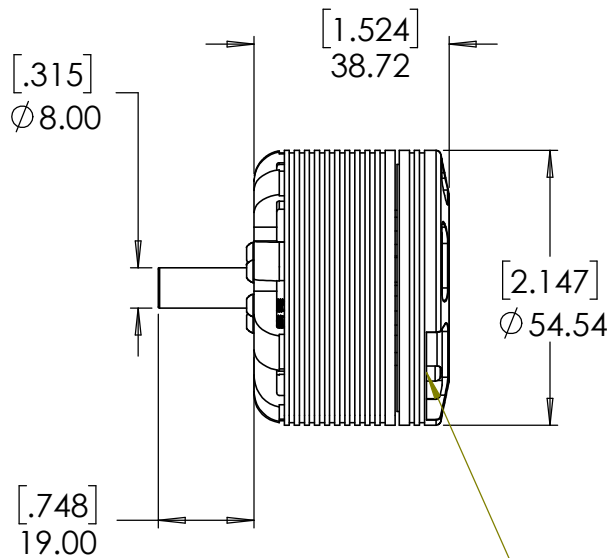
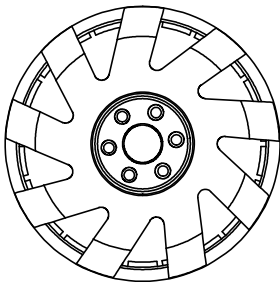
PROPRIETARY AND CONFIDENTIAL

THE INFORMATION CONTAINED IN THIS DRAWING IS THE SOLE PROPERTY OF NEUTRONICS ENTERPRISES INC., AND SHALL NOT BE COPIED, DISCLOSED TO THIRD PARTIES, OR USED FOR ANY PURPOSE OTHER THAN THE SPECIFIC PURPOSE FOR WHICH IT WAS PROVIDED. ANY REPRODUCTION IN PART OR AS A WHOLE WITHOUT THE WRITTEN AUTHORIZATION OF NEUTRONICS ENTERPRISES INC. IS PROHIBITED.

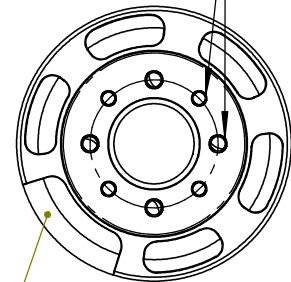
REVISION HISTORY			
REV.	DESCRIPTION	DATE	APPROVED
2023A	INITIAL RELEASE	06/02/2024	JK
2024C	MATERIAL UPDATES	09/14/2024	JK

B

B



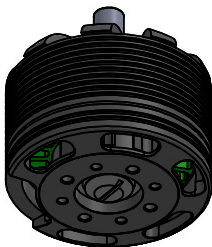
2X 90° PATTERN THREADS
M3 x Ø 25.4mm
M4 x Ø 25.4mm



WIRES EXIT HERE

A

A



- NOTES
1. DIMENSIONS ARE IN MM AND [IN]
 2. TOLERANCES +/- 0.05mm UNLESS OTHERWISE SPECIFIED
 3. DIMENSIONS AND TOLERANCES APPLY AFTER FINISHING

NeuMotors

TITLE: W4619 ASSY PROFILE -
STANDARD MOUNT

REV: 2024C

<https://neumotors.com/>

info@neutronics.com

SHEET 1 OF 1

2

1

2

1

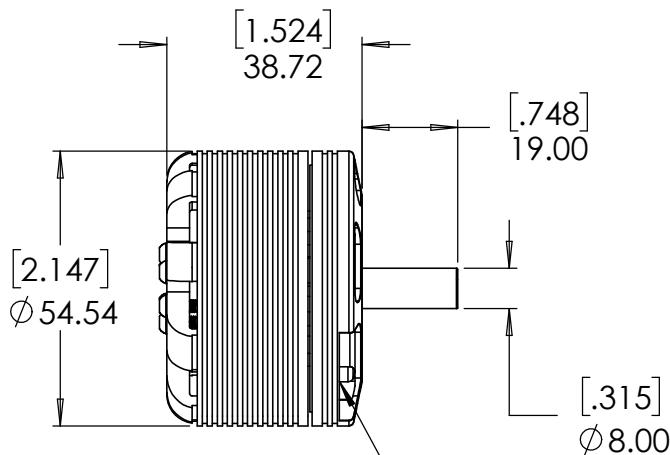
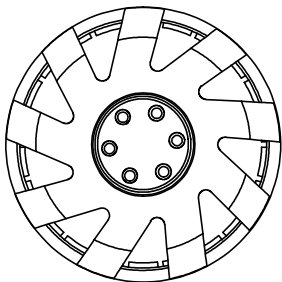
PROPRIETARY AND CONFIDENTIAL

THE INFORMATION CONTAINED IN THIS DRAWING IS THE SOLE PROPERTY OF NEUTRONICS ENTERPRISES INC., AND SHALL NOT BE COPIED, DISCLOSED TO THIRD PARTIES, OR USED FOR ANY PURPOSE OTHER THAN THE SPECIFIC PURPOSE FOR WHICH IT WAS PROVIDED. ANY REPRODUCTION IN PART OR AS A WHOLE WITHOUT THE WRITTEN AUTHORIZATION OF NEUTRONICS ENTERPRISES INC. IS PROHIBITED.

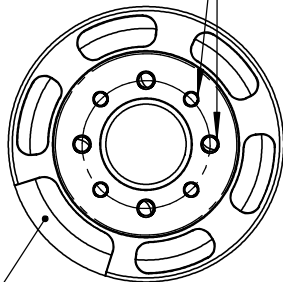
REVISION HISTORY			
REV.	DESCRIPTION	DATE	APPROVED
2023A	INITIAL RELEASE	06/02/2024	JK
2024C	MATERIAL UPDATES	09/14/2024	JK

B

B



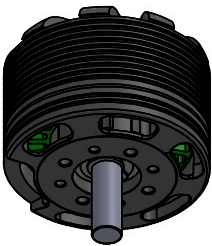
2X 90° PATTERN THREADS
M3 x Ø 25.4mm
M4 x Ø 25.4mm



WIRES EXIT HERE

A

A



- NOTES
1. DIMENSIONS ARE IN MM AND [IN]
 2. TOLERANCES +/- 0.05mm UNLESS OTHERWISE SPECIFIED
 3. DIMENSIONS AND TOLERANCES APPLY AFTER FINISHING

NeuMotors

TITLE: W4619 ASSY PROFILE -
REAR MOUNT

REV: 2024C

<https://neumotors.com/>

info@neutronics.com

SHEET 1 OF 1

2

1