

2

1

PROPRIETARY AND CONFIDENTIAL

THE INFORMATION CONTAINED IN THIS DRAWING IS THE SOLE PROPERTY OF NEUTRONICS ENTERPRISES INC., AND SHALL NOT BE COPIED, DISCLOSED TO THIRD PARTIES, OR USED FOR ANY PURPOSE OTHER THAN THE SPECIFIC PURPOSE FOR WHICH IT WAS PROVIDED. ANY REPRODUCTION IN PART OR AS A WHOLE WITHOUT THE WRITTEN AUTHORIZATION OF NEUTRONICS ENTERPRISES INC. IS PROHIBITED.

REVISION HISTORY

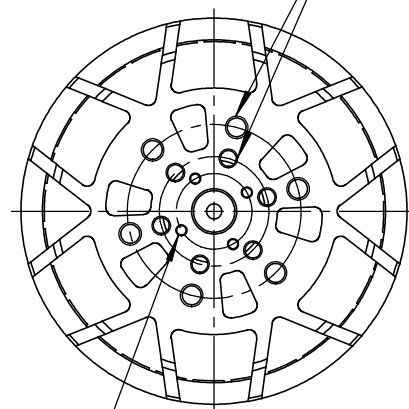
REV.	DESCRIPTION	DATE	APPROVED
2023C	INITIAL RELEASE	12/01/2023	JK
2024C	MATERIAL UPDATES	09/10/2024	JK

B

B

2X 60° PATTERN THREADS

M6 x \varnothing 46mm
M5 x \varnothing 29mm


90° PATTERN THREAD
M3 x \varnothing 20mm

[.472]
 \varnothing 12.00

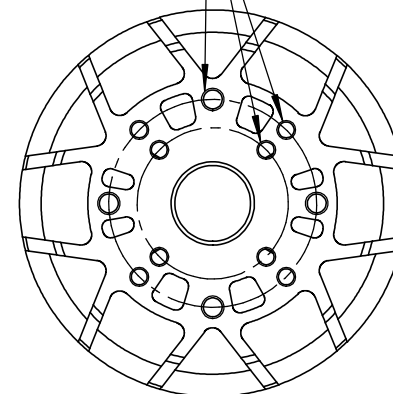
[.236]
6.00

[1.981]
50.31

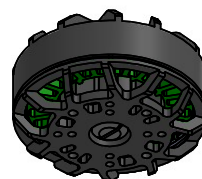
[4.025]
 \varnothing 102.23

3X 90° PATTERN THREADS

M6 x \varnothing 55mm
M5 x \varnothing 55mm
M5 x \varnothing 40mm



WIRES EXIT HERE


NOTES

1. DIMENSIONS ARE IN MM AND [IN]
2. TOLERANCES +/- 0.05mm UNLESS OTHERWISE SPECIFIED
3. DIMENSIONS AND TOLERANCES APPLY AFTER FINISHING

NEUMOTORS

TITLE:
W8819 ASSY PROFILE
REV:
2024C
<https://neumotors.com/>
info@neutronics.com
SHEET 1 OF 1

2

1

A

A