

2

1

PROPRIETARY AND CONFIDENTIAL

THE INFORMATION CONTAINED IN THIS DRAWING IS THE SOLE PROPERTY OF NEUTRONICS ENTERPRISES INC. AND SHALL NOT BE COPIED, DISCLOSED TO THIRD PARTIES, OR USED FOR ANY PURPOSE OTHER THAN THE SPECIFIC PURPOSE FOR WHICH IT WAS PROVIDED. ANY REPRODUCTION IN PART OR AS A WHOLE WITHOUT THE WRITTEN AUTHORIZATION OF NEUTRONICS ENTERPRISES INC. IS PROHIBITED.

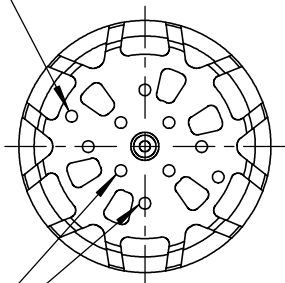
REVISION HISTORY

REV.	DESCRIPTION	DATE	APPROVED
2023B	INITIAL RELEASE	07/05/2024	JK
2024C	MATERIAL UPDATES	08/10/2024	JK

B

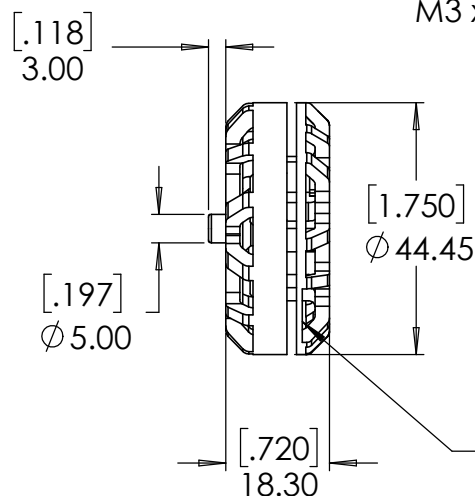
B

180° PATTERN THREAD
M3 x Ø 28mm

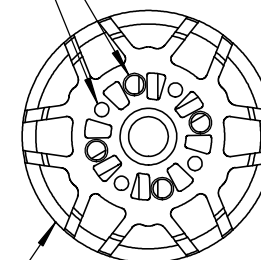


2X 90° PATTERN THREADS
M3 x Ø 12mm
M3 x Ø 20mm

2X 90° PATTERN THREADS
M3 x Ø 12mm
M3 x Ø 20mm



WIRES EXIT HERE



A

NOTES

1. DIMENSIONS ARE IN MM AND [IN]
2. TOLERANCES +/- 0.05mm UNLESS OTHERWISE SPECIFIED
3. DIMENSIONS AND TOLERANCES APPLY AFTER FINISHING

NEUMOTORS

TITLE:

W3805 ASSY PROFILE

REV:

2024C

<https://neumotors.com/>info@neutronics.com

SHEET 1 OF 1

2

1