

PROPRIETARY AND CONFIDENTIAL

THE INFORMATION CONTAINED IN THIS DRAWING IS THE SOLE PROPERTY OF NEUTRONICS ENTERPRISES INC. AND SHALL NOT BE COPIED, DISCLOSED TO THIRD PARTIES, OR USED FOR ANY PURPOSE OTHER THAN THE SPECIFIC PURPOSE FOR WHICH IT WAS PROVIDED. ANY REPRODUCTION IN PART OR AS A WHOLE WITHOUT THE WRITTEN AUTHORIZATION OF NEUTRONICS ENTERPRISES INC. IS PROHIBITED.

REVISION HISTORY

REV.	DESCRIPTION	DATE	APPROVED
2023A	INITIAL RELEASE	06/02/2024	JK

DETAIL A

SCALE 2 : 1

AROUND EDGE
TYP

AROUND EDGE
BOTH ENDS

6X ϕ 3.00 [0.118]
THRU ALL

NOTES

1. MATERIAL: 420SS - HARDENED AND STRESS RELIEVED
2. BREAK ALL SHARP EDGES.
3. DIMENSIONS ARE IN MM AND [IN]
4. TOLERANCES +/- 0.05mm UNLESS OTHERWISE SPECIFIED
5. DIMENSIONS AND TOLERANCES APPLY AFTER FINISHING

NEUMOTORS

TITLE: W4625 SHAFT -
STANDARD MOUNT

REV: 2023A

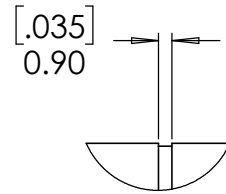
<https://neumotors.com/>

info@neutronics.com

SHEET 1 OF 1

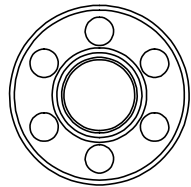
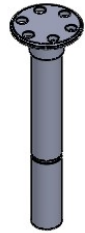
THE INFORMATION CONTAINED IN THIS DRAWING IS THE SOLE PROPERTY OF NEUTRONICS ENTERPRISES INC. AND SHALL NOT BE COPIED, DISCLOSED TO THIRD PARTIES, OR USED FOR ANY PURPOSE OTHER THAN THE SPECIFIC PURPOSE FOR WHICH IT WAS PROVIDED. ANY REPRODUCTION IN PART OR AS A WHOLE WITHOUT THE WRITTEN AUTHORIZATION OF NEUTRONICS ENTERPRISES INC. IS PROHIBITED.

REVISION HISTORY			
REV.	DESCRIPTION	DATE	APPROVED
2023A	INITIAL RELEASE	06/02/2024	JK



DETAIL A

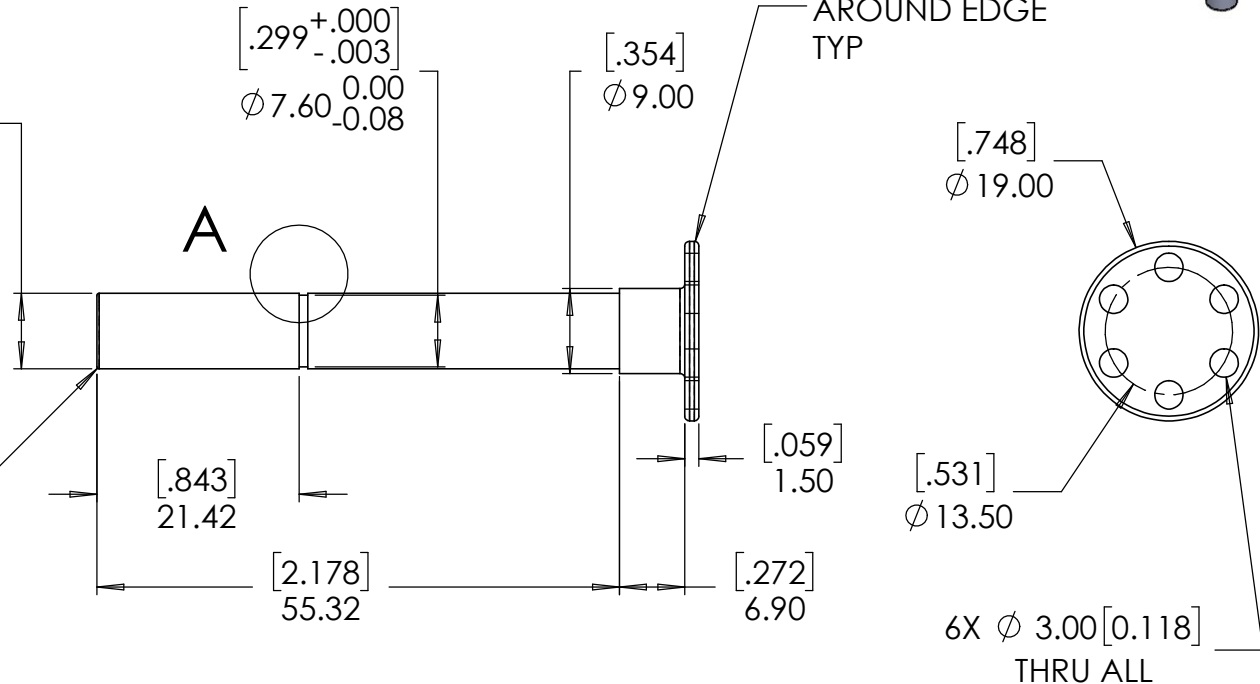
SCALE 2 : 1



$$\begin{bmatrix} .315^{+.000} \\ -.000 \end{bmatrix}$$

$$\phi 8.000 \begin{matrix} 0.000 \\ -.0005 \end{matrix}$$
 TYP

[.010]
R0.25
AROUND EDGE



NOTES

1. MATERIAL: 420SS - HARDENED AND STRESS RELIEVED
2. BREAK ALL SHARP EDGES.
3. DIMENSIONS ARE IN MM AND [IN]
4. TOLERANCES +/- 0.05mm UNLESS OTHERWISE SPECIFIED
5. DIMENSIONS AND TOLERANCES APPLY AFTER FINISHING

NEUMOTORS

TITLE: W4625 SHAFT -
REAR MOUNT

REV:	2023A
------	-------

<https://neumotors.com/>

info@neutronics.com

SHEET 1 OF 1